

MAGNETS



PA-56

Painted Magnetic Bar, Model PA-56, these quality magnets are perfect for classroom experiments. size : 75 x 15 x 10mm, (300 Gauss), made of Al/Fe/C. Marked with “N” & “S” and with keeper.

Alnico Magnetic Bar, ideal for a variety of applications - including extended classroom use. Made of an alloy of iron, nickel, aluminium and cobalt. They have especially high flux densities and produce a large coercive force relative to their weight. Stamped with “N” and “S” and with keeper.

Model

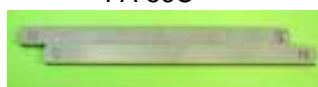
PA-56C	Size : 100 x 10 x 7 mm (700 Gauss)
PA-56C-1	Size : 50 x 10 x 7 mm (700 Gauss)
PA-56C-2	Size : 75 x 10 x 7 mm (700 Gauss)
PA-56C-3	Size : 125 x 10 x 7 mm (700 Gauss)
PA-56C-4	Size : 150 x 10 x 7 mm (700 Gauss)
PA-56E	Size : 75 x 15 x 10 mm (700 Gauss)



PA-56C



PA-56E



PA-56C-4

Painted Bar Magnet, rectangular, North Pole painted red. South Pole blue. Stamped with “N” and “S” and with keeper.



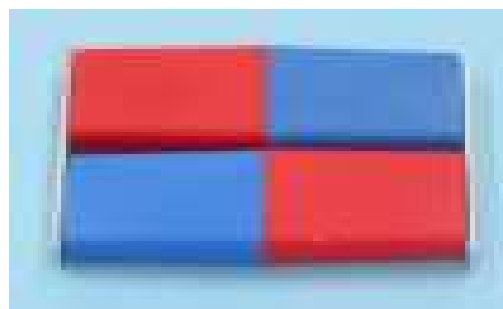
PA-56D, PA-56F & PA-56H

Model

PA-56D	Alnico, size : 100 x 20 x 6 mm (700 Gauss)
PA-56F	Alnico, size : 150 x 19 x 6mm (700 Gauss)
PA-56H	AlNiFe, size : 150 x 19 x 6mm (500 Gauss)



PA-57



PA-56B

U-Magnetic, Model PA-57, overall length 80mm, cross section of poles 20 x 10mm. space between poles 42mm, (350 Gauss), made of Al/Fe/C. North Pole painted red. South Pole blue and with keeper.

Model PA-56B Plastic Cased Magnet Bars, in pair and in red and blue, approximately 80mm long. Ideal for demonstration of attraction and repulsion experiment. Dimension : 10 x 80 x 20mm.

Horseshoe Magnet, strong steel magnets, painted red with silver poles. Each magnet is stamped with “N” and “S” and supplied with a keeper.

Model

PA-57C	size : 75 x 40 x 5mm (350 Gauss)
PA-57D	size : 100 x 50 x 6mm (350 Gauss)
PA-57E	size : 150 x 70 x 6mm (350 Gauss)



PA-57C to PA-57E