

Magnification lens are designed to be simply exchangeable (interchangeable system) for all machine types. Optical lens are used. Magnification for exchangeable lens are available with 8 kinds x2,x3,x4,x6,x8,x10,x12,x15.

Illumination lamp FCL20W Circular fluorescent lamp (common with ENV type) is best suited for not only industrial use such as metal process, measurement, test, inspection of electronics parts, soldering but also food inspection, apparel and Jewry process.

**Characteristics:**

- In order to be able to observe with high magnification and a wide field of view, OTSUKA developed a high magnification, wide aperture lens. Their goal is to achieve an easier and wider field of view, minimizing distortion.
- The usage is simpler and more flexible than a microscope. It has the magnifications capability of a microscope, with the flexibility of a magnifying glass.
- 8 kinds of magnification are available. The user can select and change the magnification level depending on the object, which the user wishes to observe.



**Table Stand Type  
Model SKK-B/□X\***

- Table stand type
- Total length: 350mm
- Vertical bar: 230mm
- Horizontal bar: 140mm
- Table: 180x190 (295) mm
- Lens case: 230mm
- Weight: 2.7 kg
- Power supply: 220V 50Hz A.C.



**Light Box Type  
Model SKK-CL/□X\***

- Light box type (with transparent illumination)
- Total length: 340mm
- Vertical bar: 230mm
- Horizontal bar: 140mm
- Box dimensions: 274x325x110 (60) mm
- Transparent illumination part: 210x300mm
- Weight: 5 kg
- Power supply: 220V 50Hz A.C.



**Free Arm Type  
Model SKK-F/□X\***

- Free arm type (Clamp stand attachable)
- Suited for multipurpose use such as inspections, design, engineering work and etc.
- Arm dimensions: 1,000mm
- Weight: 3.7 kg
- Power supply: 220V 50Hz A.C.

\*Remark: □ is the magnification of lens. For example, the model number of 4 times magnification is SKK-B/4X.

**Interchangeable Lens System (Can be sold individually)**

<b>Magnification</b>	2X	3X	4X	6X	8X	10X	12X	15X
<b>Lens diameter</b>	130mm	130mm	130mm	105mm	85mm	85mm	90mm	70mm
<b>Configuration lens</b>	1 lens	1 lens	2 lens	2 lens	3 lens	4 lens	5 lens	6 lens
<b>Light source</b>	22W Circular fluorescent lamp							

Supplementary lens: Used with standard 2 times magnification lens, magnifying power increase to 4t times.



**香港科學儀器社有限公司**  
Che Scientific Co. (Hong Kong) Ltd.

**Hong Kong Head office:**

Unit D, 18/F, Roxy Industrial Centre, 58-66 Tai Lin Pai Road, Kwai Chung, Hong Kong

TEL: (852) 2481 1323 FAX: (852) 2418 1302

E-mail: [sales@chescientific.com](mailto:sales@chescientific.com) Website: [www.chescientific.com](http://www.chescientific.com)



**浙江科通儀器有限公司**  
Zhejiang Fortune Scientific Co. Ltd.

TEL: (86 571) 8729 7500 FAX: (86 571) 8729 7511

E-mail: [sales@fortunescientific.com.cn](mailto:sales@fortunescientific.com.cn)

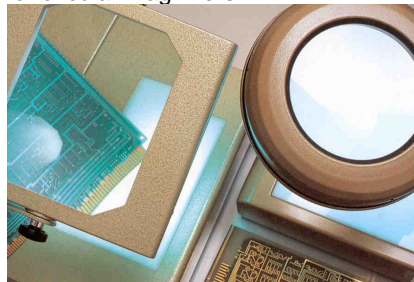
Website: [www.fortunescientific.com.cn](http://www.fortunescientific.com.cn)

**Guangzhou Branch:**

TEL: (86 20) 8130 7388 FAX: (86 20) 8108 4925

E-mail: [guangzhou@fortunescientific.com.cn](mailto:guangzhou@fortunescientific.com.cn)

Magnifiers with large diameter circular lens (150mm diameter) or square lens are available for the inspection of large object. 2X, 3X or 4X magnification lens are available for circular magnifiers.



WIDE-B



- 2X, 3X or 4X (Please select)
- Aperture lens: 150mm
- Vertical bar: 230mm
- Horizontal bar: 140mm
- Total length: 367mm

WIDE-CL



- 2X, 3X or 4X (Please select)
- Aperture lens: 150mm
- Vertical bar: 260mm
- Horizontal bar: 140mm
- Total length: 380mm
- Box dimensions: 345x365x80mm
- Transparent illumination part: 210x300mm
- Weight: 6.7 kg  
(20W circular fluorescent lamp in box)

WIDE-F



- 2X, 3X or 4X (Please select)
- Aperture lens: 150mm
- Arm dimensions: 1,000mm
- Clamp width: 15~60mm

OSL-1



- 2X or 4X (Please select)
- Light box (With transparent illumination)
- Lens dimensions: 100x140mm
- Total length: 425mm
- Vertical bar: 360mm
- Horizontal bar: 150mm
- Box dimensions: 300x310x65mm
- Transparent illumination part: 150x220mm
- Lens case: 180x237x42mm
- Weight: 6.5kg  
(Two 6W Linear fluorescent lamp in box)

OSL-2



- 2X or 4X (Please select)
- Lens dimensions: 100x140mm
- Total length: 425mm
- Vertical bar: 360mm
- Horizontal bar: 150mm
- Box dimensions: 300x310x65mm
- Lens case: 180x237x42mm
- Weight: 6.5kg

OSL-3



- 2X or 4X (Please select)
- Long arm (Attachable clamp stand)
- Vertical bar: 340mm
- Horizontal bar: 360mm
- Total Length: 435mm
- Weight: 6.5kg
- Possible attachable with 60mm



香港科學儀器社有限公司  
Che Scientific Co. (Hong Kong) Ltd.

**Hong Kong Head office:**

Unit D, 18/F, Roxy Industrial Centre, 58-66 Tai Lin Pai Road, Kwai Chung, Hong Kong

TEL: (852) 2481 1323 FAX: (852) 2418 1302

E-mail: [sales@chescientific.com](mailto:sales@chescientific.com) Website: [www.chescientific.com](http://www.chescientific.com)



浙江科通儀器有限公司  
Zhejiang Fortune Scientific Co. Ltd.

TEL: (86 571) 8729 7500 FAX: (86 571) 8729 7511

E-mail: [sales@fortunescientific.com.cn](mailto:sales@fortunescientific.com.cn)

Website: [www.fortunescientific.com.cn](http://www.fortunescientific.com.cn)

**Guangzhou Branch:**

TEL: (86 20) 8130 7388 FAX: (86 20) 8108 4925

E-mail: [guangzhou@fortunescientific.com.cn](mailto:guangzhou@fortunescientific.com.cn)