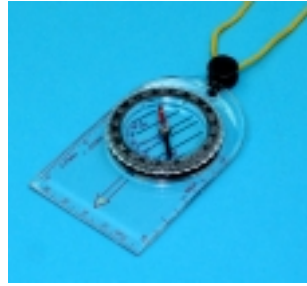


COMPASS



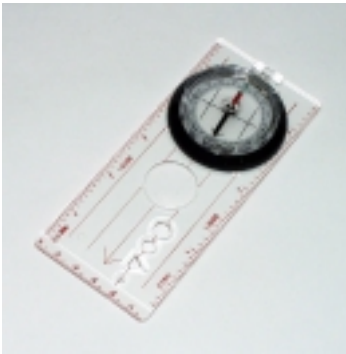
PA-138

Liquid Filled Magnetic Compass, Model PA-138, diam. 50mm, a durable, in a black plastic case. A transparent see-through design makes this ideal for use with maps and charts.



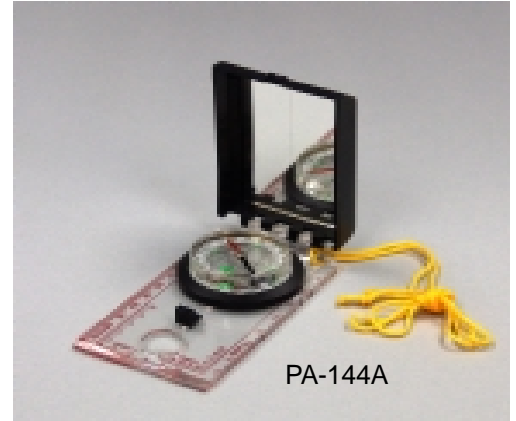
PA-139

Map Compass, Model PA-139, A 45mm diameter liquid filled compass is mounted on a 55 x 90 mm The transparent base plate has scales in inches and millimeters, with lanyard.



PA-144

Explorer Compass, Model PA-144, liquid-filled transparent housing, diam. 45 mm, encloses a highly magnetized needle set on a sapphire bearing. Dial is graduated in 2 deg increments. 2 commonly used topographical map scales - mileage scale and kilometer scale. (60 x 140 x 17mm)



PA-144A

Compass with clinometer, Model PA-144A, liquid-filled, side mirror, transparent protactor plate and a transparent housing. The red and black needle rides on a jewel bearing for minimum friction. Any incline can be read accurately to 2 degree. An engineer scale in inches is on one side of the base plate and a millimeter scale is on the other, the compass measures 110 x 64 x 20mm., with lanyard.

New



PA-161B



PA-161

Pocket Compass, a format compass in aluminum case, marked in degrees, with N and S indication. Suitable for use as a plotting compass or for normal application.

PA-161 , diameter 40mm
PA-161B, diameter 77mm



PA-151

Magnetic Compass, Plastic casing, excellent for magnetic fields tracking. **Model PA-151**, diam. 20mm, **Model PA-153**, diam. 45mm.



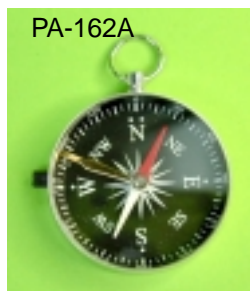
PA-153

Plotting Compass, Model PA-161A, with marked, aluminium case, diam. 15mm approx.



PA-162

Magnetic Compass with Lock, Model PA-162, a magnetic compass in aluminum case, diam. 42 mm, with a glass top, a lock to hold the pointer stationary, and hinged cover.



PA-162A

Pocket Compass with Lock, Model PA-162A, a format compass in aluminum case, 42mm diameter, with a glass top, a lock to hold the pointer stationary, marked in degrees.



PA-161A